

MALDIVES LAND SURVEY AUTHORITY

MINISTRY OF HOUSING AND INFRASTRUCTURE

Office (PABX): +(960) 3004300, Fax: +(960) 3004254

Email: survey@housing.gov.mv

Web: www.surveyofmaldives.gov.mv,

Ameenee Magu, Maafannu, Male', 20392, Maldives.



CONTROLPOINT DETAILS	Station Number	PSM 5181
Coordinate Information		
Geodetic	Grid	
WGS 84	UTM Zone 43	
Lat: -	E:	269337.392m
Long: -	N:	593092.586m
Ellp Height:	Orth Height:	+2.219
Island Name: R.Maamunagau (LD401)	Date:	09 SEP 2019

Monument description & method of survey:

-Monument Type A (Rural)

Horizontal coordinates fixed by GNSS Static Post processing.

-Elevation fixed by GNSS Static Post Processing using PSM5183 as control

-PSM 150mm above ground

General site condition & access:

- Easily accessible area with wide angle of sky visibility

-In BOH near football ground

Owner: Leisure Horiozons Pvt. Ltd

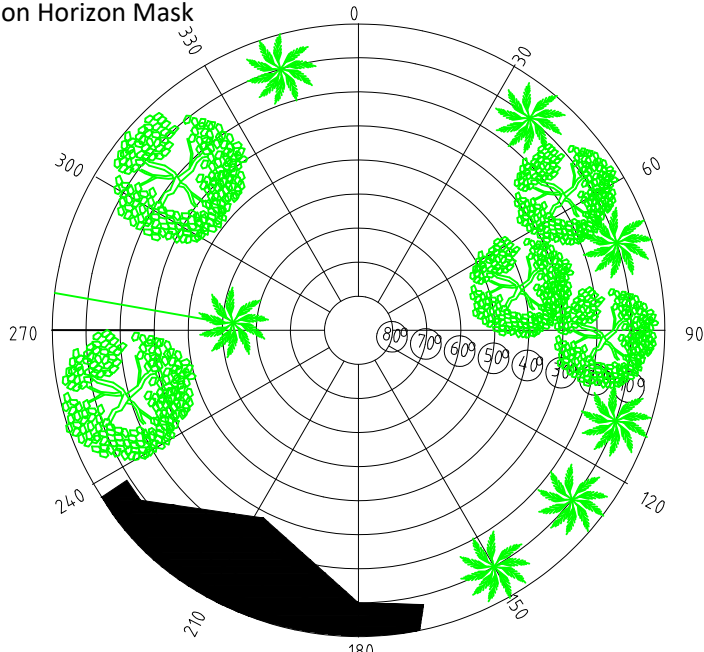


SITE INFORMATION

Station Number

P	S	M	5	1	8	1
---	---	---	---	---	---	---

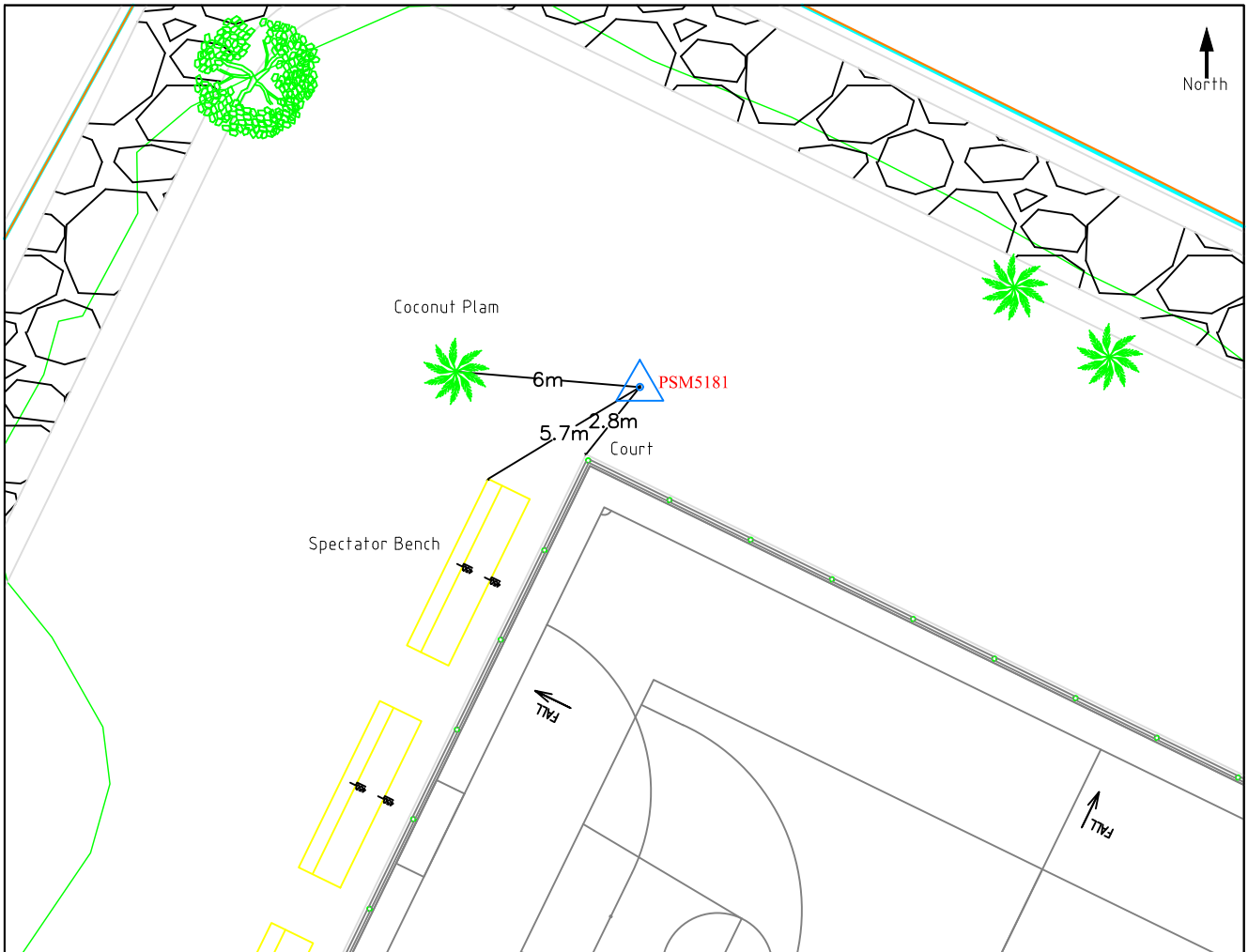
Station Horizon Mask



Height above Marker that horizon was mapped from 1.5 m

Magnetic Declination
 Declination applied to this figure?
 Yes No

Locality



Sketched by: NUAIM

Scale: Not to Scale

Date: 09 SEP 2019

MALDIVES LAND SURVEY AUTHORITY

MINISTRY OF HOUSING AND INFRASTRUCTURE

Office (PABX): +(960) 3004300, Fax: +(960) 3004254

Email: survey@housing.gov.mv

Web: www.surveyofmaldives.gov.mv,

Ameenee Magu, Maafannu, Male', 20392, Maldives.



CONTROLPOINT DETAILS	Station Number	PSM 5182
Coordinate Information		
Geodetic	Grid	
WGS 84	UTM Zone 43	
Lat: -	E:	269422.524m
Long: -	N:	593056.669m
Ellp Height:	Orth Height:	+2.118m
Island Name: R.Maamunagau (LD401)	Date:	09 SEP 2019

Monument description & method of survey:

-Monument Type A (Rural)

Horizontal coordinates fixed by GNSS Static survey Post processing.

-Elevation fixed by GNSS Static Post Processing using PSM5183 as control

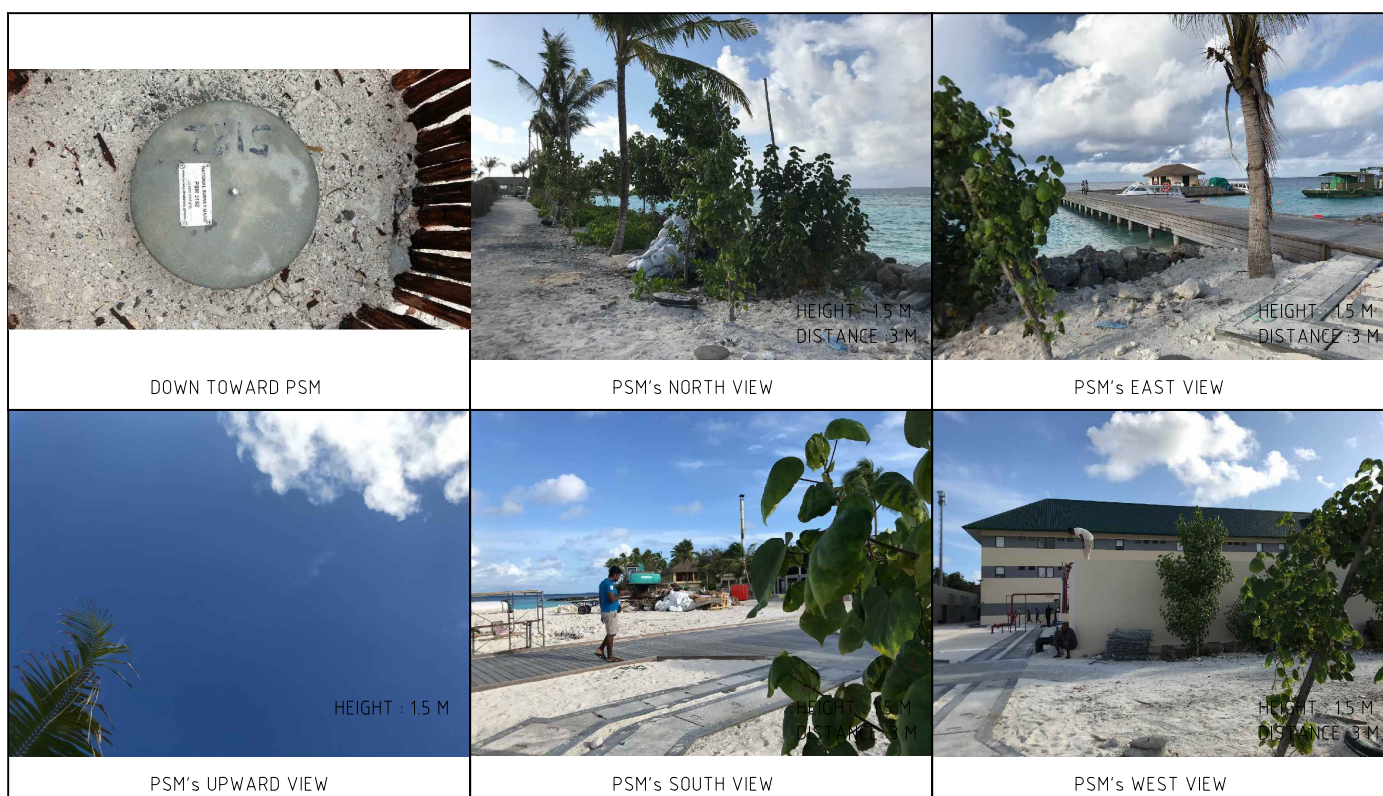
-PSM 150mm above ground

General site condition & access:

- Easily accessible area with wide angle of sky visibility

- In BOH near Service Jetty Area

Owner: Leisure Horiozons Pvt. Ltd

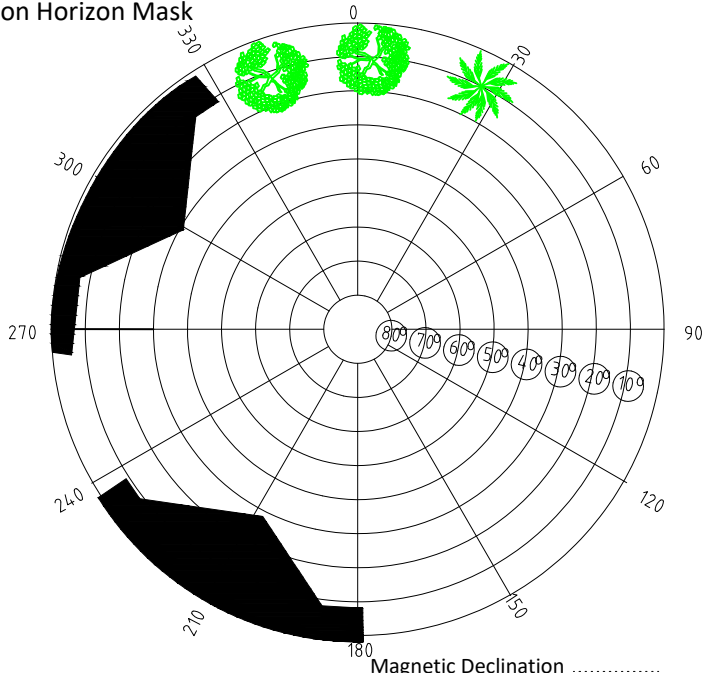


SITE INFORMATION

Station Number

P	S	M	5	1	8	2
---	---	---	---	---	---	---

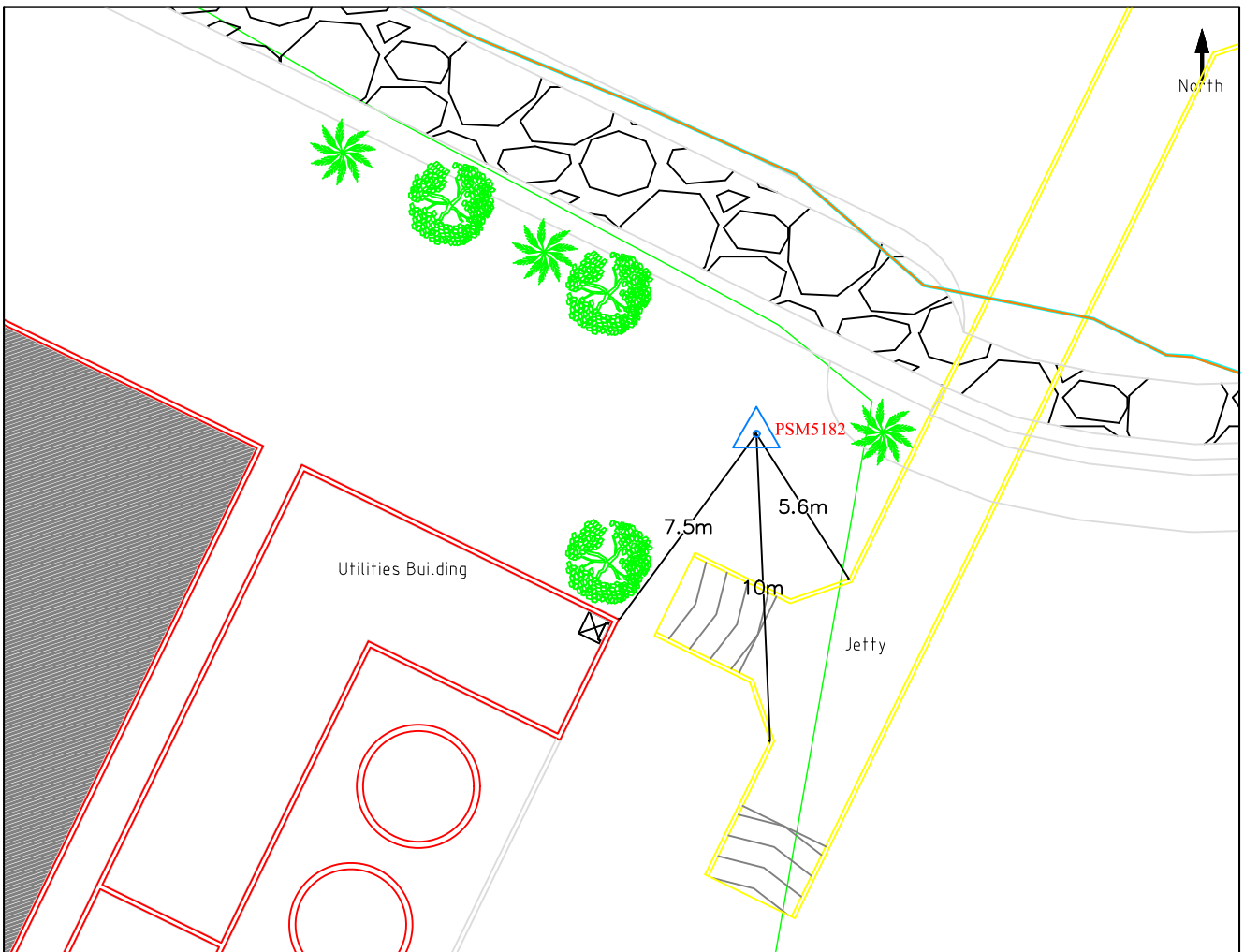
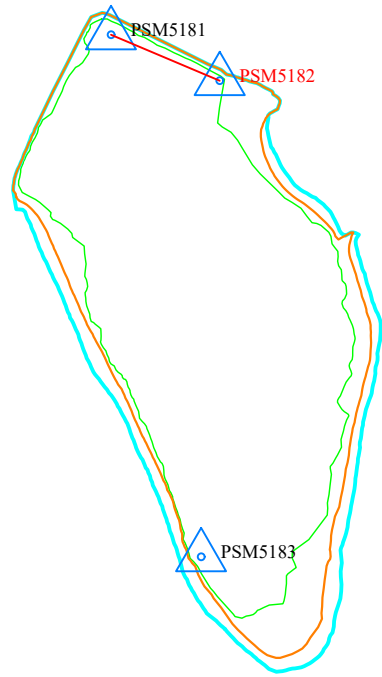
Station Horizon Mask



Height above Marker that horizon was mapped from 1.5 m

Magnetic Declination
Declination applied to this figure?
 Yes No

Locality



Sketched by: NUAIM

Scale: Not to Scale

Date: 09 SEP 2019

MALDIVES LAND SURVEY AUTHORITY

MINISTRY OF HOUSING AND INFRASTRUCTURE

Office (PABX): +(960) 3004300, Fax: +(960) 3004254

Email: survey@housing.gov.mv

Web: www.surveyofmaldives.gov.mv,

Ameenee Magu, Maafannu, Male', 20392, Maldives.



CONTROLPOINT DETAILS	Station Number	PSM 5183
Coordinate Information		
Geodetic	Grid	
WGS 84	UTM Zone 43	
Lat: -	E:	269412.031m
Long: -	N:	592689.061m
Ellp Height:	Orth Height:	+1.506m
Island Name: R.Maamunagau (LD0401)	Date:	09 SEP 2019

Monument description & method of survey:

-Monument Type A (Rural)

Horizontal coordinates fixed by GNSS Static survey Post processing.

-Elevation reduced relative to Local MSL by reference to tide prediction data MET (Hulhule)

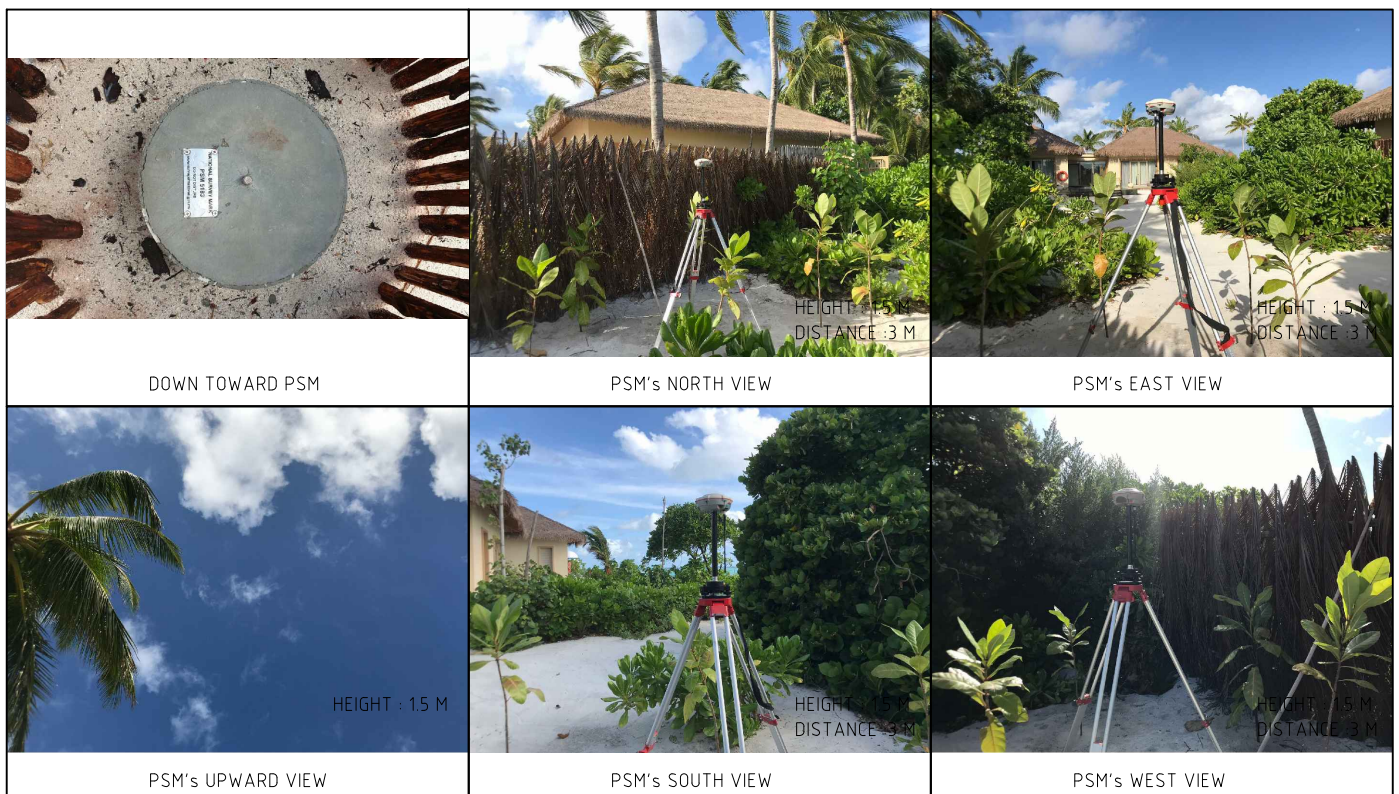
-PSM 150mm above ground

General site condition & access:

- Easily accessible area with wide angle of sky visibility

-In front of Villa 111

Owner: Leisure Horiozons Pvt. Ltd

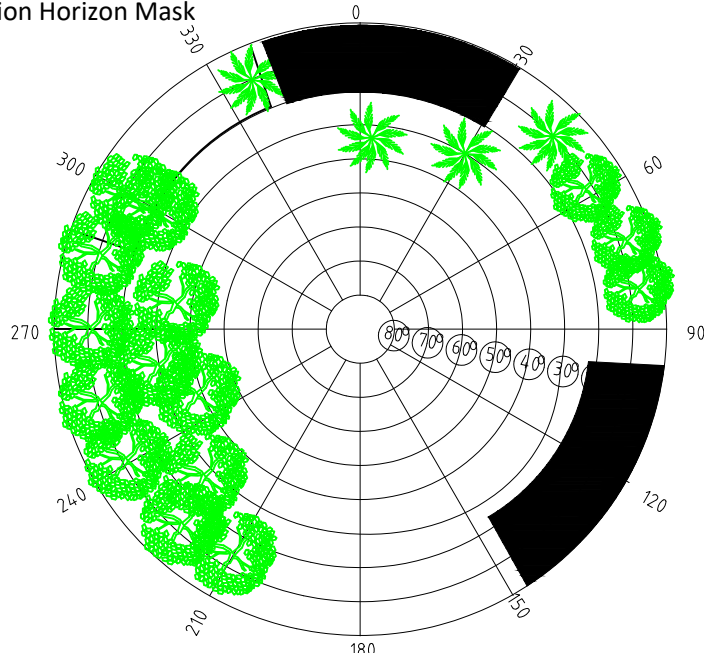


SITE INFORMATION

Station Number

P	S	M	5	1	8	3
---	---	---	---	---	---	---

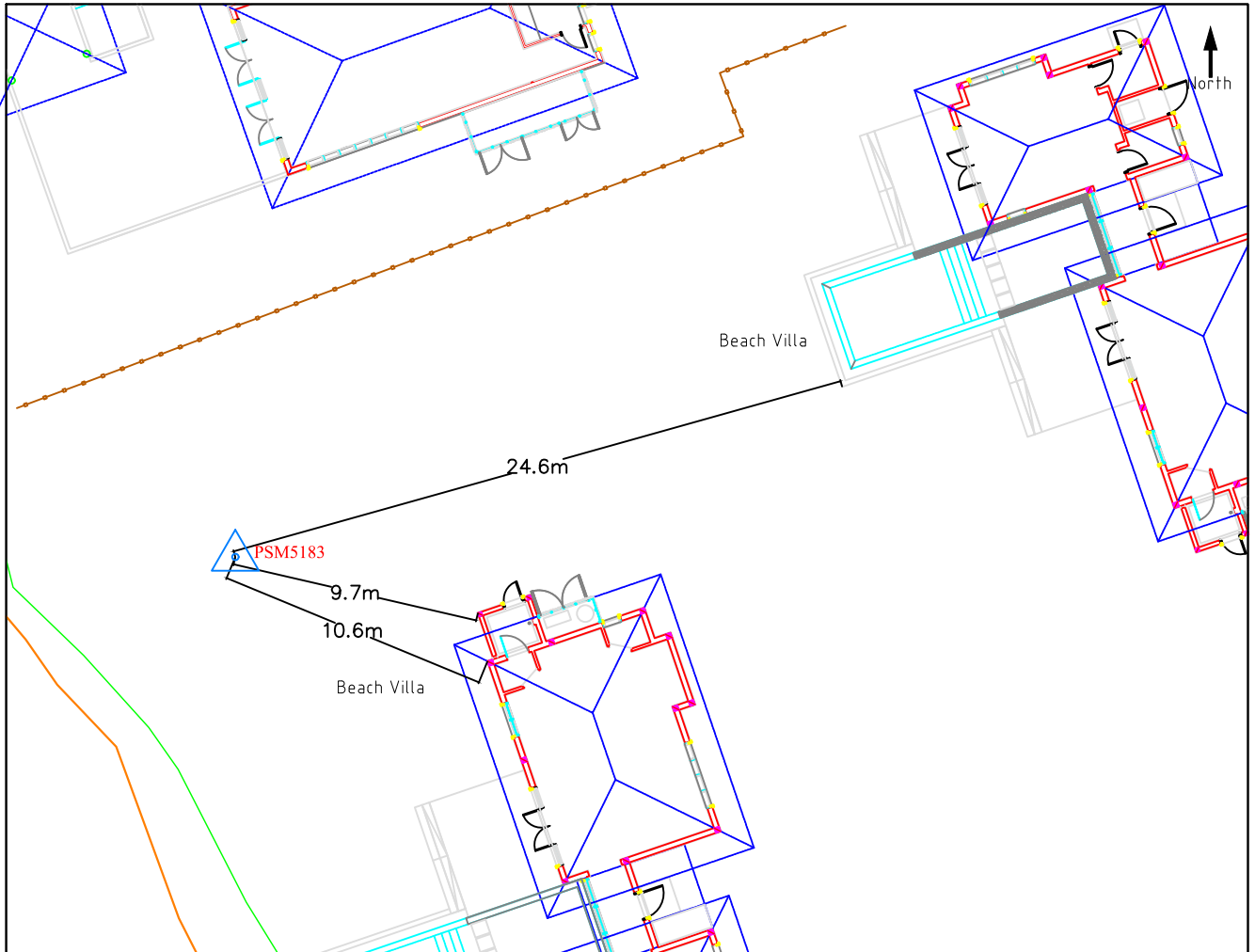
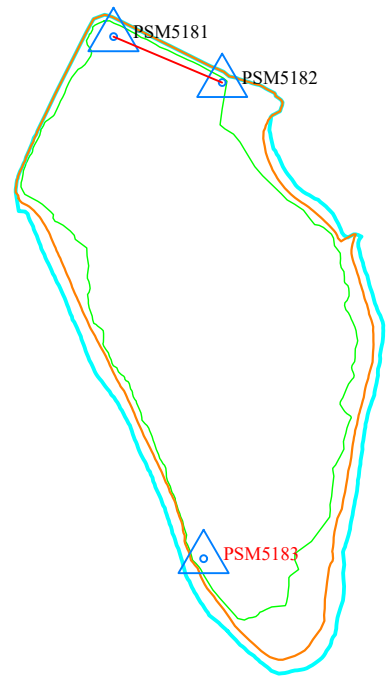
Station Horizon Mask



Height above Marker that horizon was mapped from 1.5 m

Magnetic Declination
Declination applied to this figure?
 Yes No

Locality



Sketched by: NUAIM

Scale: Not to scale

Date: 09 SEP 2019